

# Arrival and onsite document for FSF 2025



**FORMULA STUDENT FRANCE**



## Table of contents

<i>Changelog</i> .....	2
<i>General info</i> .....	3
Emergency numbers .....	3
Arrival procedure.....	3
Other info .....	4
<i>Competition site</i> .....	5
<i>Campsite</i> .....	6
<i>Departure procedure</i> .....	7

## Changelog

Part	Version	Changes
-	1.0	Initial publication

# General info

## Emergency numbers

Below you will find the emergency numbers to contact in case of an incident. If you ever encounter a problem, you can also inform the event Management: Mathieu JACQUET at +33 6 49 51 06 51.

- 112 - European emergency number.
- 15 - Samu.
- 17 - Emergency police.
- 18 - Fire brigade.
- 114 - Emergency number for deaf and hard of hearing people.

## Arrival procedure

FSF will be open to welcome teams from 25th August 2025 13:00 until 22:00. Teams are advised to arrive on the 25th, as the 26th is already a full day of scrutineering. We recommend the teams to announce when they plan to arrive at FSF to the Event Management. Please send a text on Whatsapp to Mathieu Jacquet (+33 6 49 51 06 51).

The check-in will take place as follows:

1. The team manager, pilots ESOs and ASOs (if applicable) are expected to present themselves at the welcome center, at the entrance of Transpolis. **ESOs and ASOs must come with their IDs ready.** The other team members can stay out of the welcome center.
2. The team manager must pay the deposit for the team: 1000€ by card or check.
3. The team manager will be given bracelets to access the venue, to distribute to their team mates, and FSF cups.
4. Pilots will be verified.
5. ESOs will be verified.
6. ASOs will be verified.
7. The team manager will be given the access to the Technical Inspection Software: <https://fstis.fsswitzerland.ch/FSFR/>.
8. The team manager will be added on the Whatsapp team manager conversation: the team manager should expect to be sent info about the event on this conversation quite often and is responsible of checking it regularly.
9. The team manager will be given the dynamic and media vests for FSF.

10. The team manager will be given the last instructions about the event.

Once this is done, the team can install its pit and its camping. **Working on the car is prohibited on the 25th.**

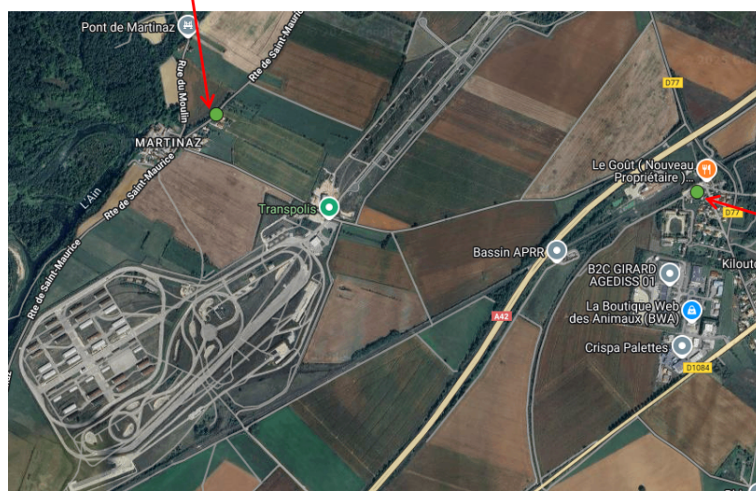
## Other info

The campsite is directly located on the venue. Please note that the venue will close from 23:00 until 7:00 everyday: no one will be able to leave the venue during these times (except for emergencies). Make sure everyone is back onsite by 22:30 every day. Only the campsite is available during these times: other buildings (including pits) will be closed.

All water available onsite is drinkable.

Bins will be available on several places onsite. Teams are required to separate glass from the waste: glass must be thrown away out of the venue by the teams at the following places:

234 route de Saint Maurice  
Martinaz  
01500 Saint Maurice de Rémens



1587 Rue de la Gare  
01150 Leyment

The rest can be thrown away in any bin onsite.

Documents regarding the event (map, planning, templates, etc...) are available on the competition website on the following link: <https://fs-france.com/fsf-2025/documents/>.

## Competition site

In the pits, teams will have access to electricity through a classic CEE 7/7 plug. Teams should plan to bring extension cords and power strips.

Alcohol is strictly prohibited on the competition site (only allowed on the campsite).

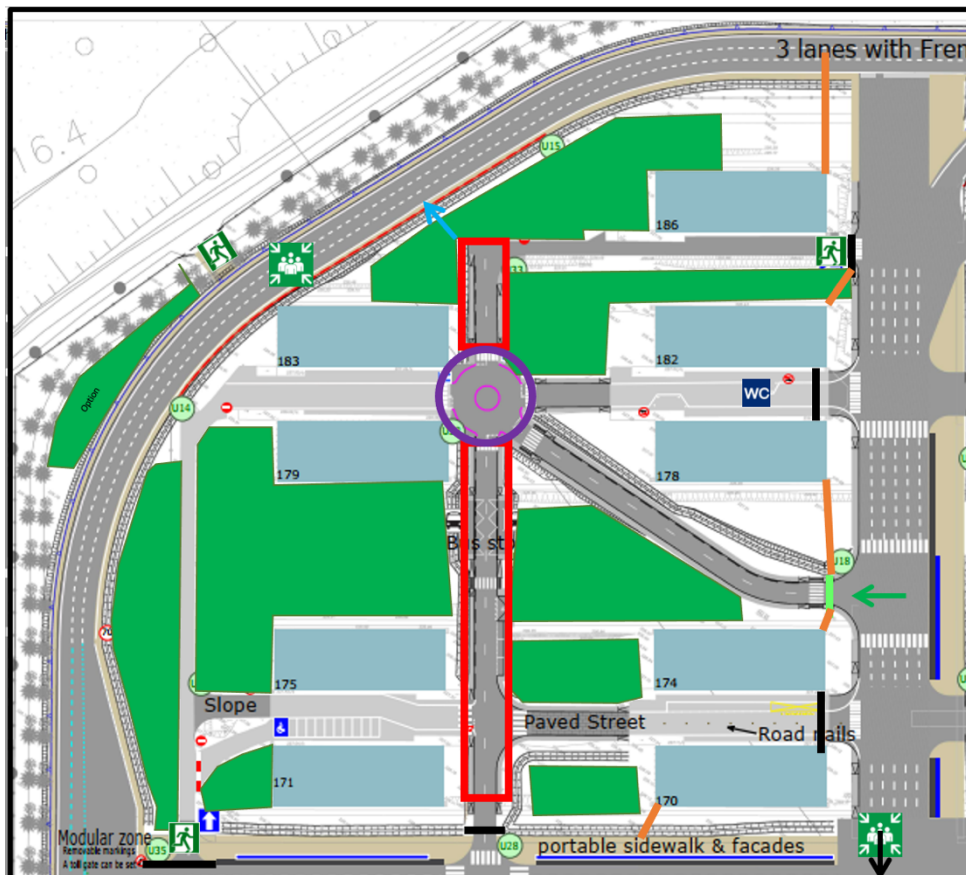
## Campsite

Each team is allocated a campsite slot according to the team size. They will have access to electricity with a classic CEE 7/7 plug: each team must size its total electricity consumption to stay below 1500W. On each camping slot, 2 plugs will be available. Teams should bring extension cords and power strips.

Due to a high risk of fire by this time of year, teams are asked to be extremely careful, especially while cooking. In particular, **gas cooking must take place on asphalt** (see the map below) and charcoal barbecues are forbidden. A team should bring a fire extinguisher while cooking. If they wish to use FSF extinguishers, they are required to cook within the area highlighted in red on the map below.

Access to electricity with more power is available in the purple area for electric cooking. However, we highly recommend teams to use gas equipment, as high-power electricity can't be granted to every team at the same time.

At any moment: **fires (other than gas cooking on asphalt) are strictly prohibited.**



Please note that the **showers will be closed from the competition site opening on Saturday 30th until noon.**

## Departure procedure

At the end of the event, i.e. by 19:00 on Sunday 31st, teams must:

- Give back the data loggers,
- Give back the vests (dynamic and media).

They can stay on the campsite until Monday 1st September but must leave by noon.

The campsite and the pits must be left as clean as they were when the team arrived. Otherwise, the deposit will be kept.

Please do not play the music too loud in the early morning (no music before 6am) and in the evening after midnight, with respect to other teams.

We invite you to be cordial and respectful with the security guards who are present to guarantee your safety and that of your belongings.

Alcohol is authorized on the campsite. Drugs are strictly prohibited. Knowing that, we remind you to respect everyone and have controlled alcohol consumption. Drug use may lead to expulsion of the event.