



Arrival Day Procedure



Table of contents

A. Changelog	2
B. Arrival at Transpolis	3
1) Check-in at the welcome center	3
2) Set your pit	3
C. Go to camping	5
D. Point of interest.....	6

A.Changelog

Part	Version	Changes
	1.0	Written on 05/08/24

B. Arrival at Transpolis

Transpolis is the partner that is welcoming the competition. It is a company that is performing vehicle test for other companies and has test tracks.

Address : 620 Rte des Fromentaux, 01500 Saint-Maurice-de-Rémens

At your arrival the parking will be indicated by signs.

1) Check-in at the welcome center

The welcome center will be open on Monday August 26th from 1 pm to 7 pm. We highly recommend you come on Monday instead of Tuesday. Volunteers will be at the welcome center to do your check-in. This is mandatory in order to access the competition site and the camping later. The Team Manager, the drivers and the ESO must get to the check-in. The following information and documents will be asked:

- Driver license of the drivers
- ESO certificates for the concerned teammates and ID
- A cheque if you wish to pay the camping fee by cheque or for the late birds camping slots
- Terms and Conditions of FSF sheet signed by all team members

The volunteers will give you:

- Wristband for each driver
- Wristband for each ESO
- 2 Wristbands for each team member (one to access Transpolis, one to access the camping if applicable)
- Fluorescent vests for Dynamic Area and Media

Once you get everything, you can enter the competition site and the camping.

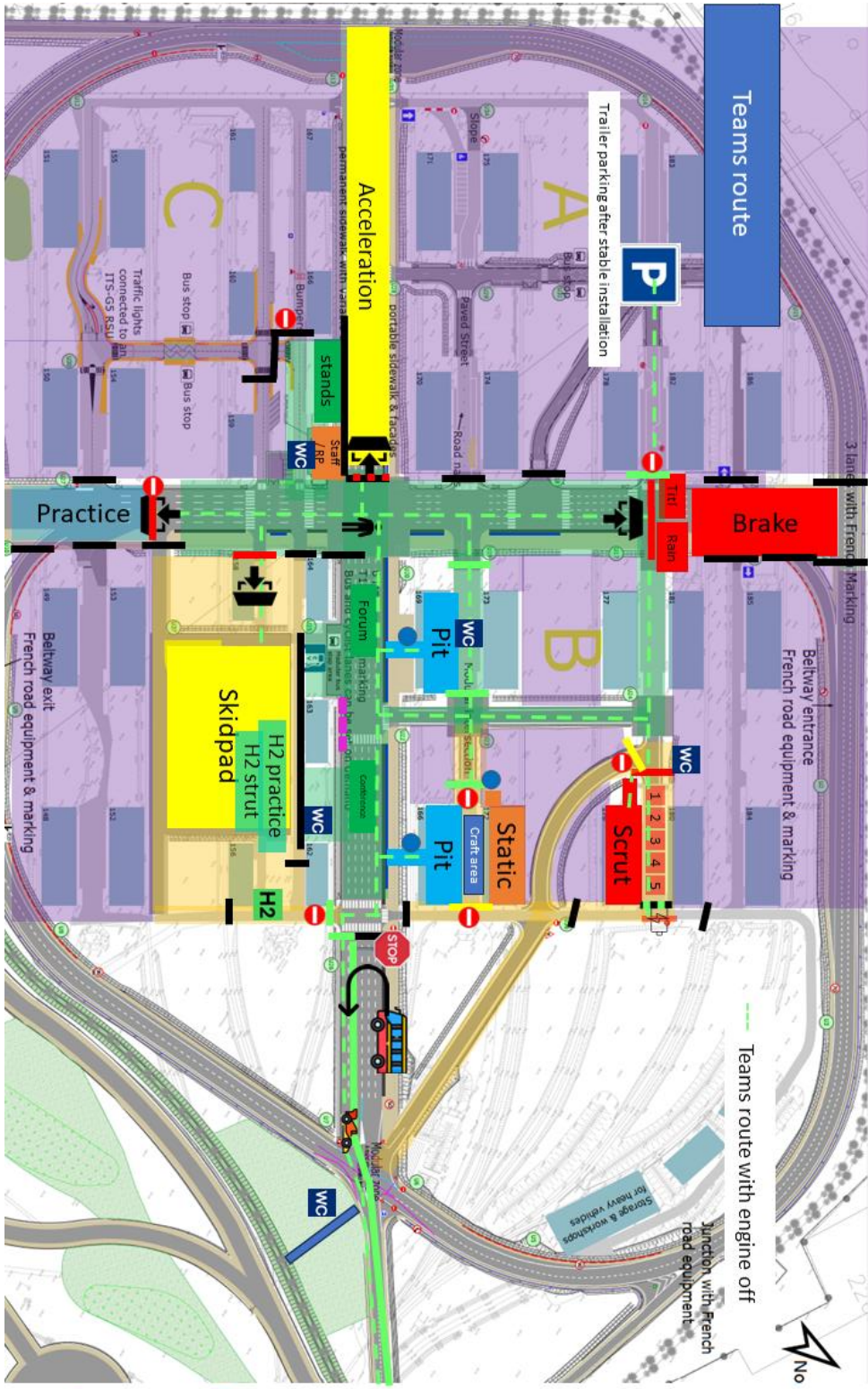
2) Set your pit

Now that you have check-in you can access the pits. The volunteers will explain you where the pits are and how to access them.

You can set your pit on the assigned area. But you can't work on the car the 26th.

A parking will be available for the trailers as you can see on the competition map.

Please, remember that the pits are open from 7.15 am to 10.45 pm from Tuesday 27th.



- Foodtruck
- Pedestrians area
- No public access, Reserved for staff and teams
- Forbidden area, except for TRANSPOLIS staff
- Barrier Worksafe-type - access forbidden
- Vauban barrier
- Vauban barrier - Crit1 Dynamic Area
- Crit1 Security agent
- Vauban barrier - STAFF only - pedestrian forbidden
- ⊘ Public forbidden

Teams route

Trailer parking after stable installation

Acceleration

Practice

Brake

Pit

Static

Scrut

Skidpad

Teams route with engine off



C. Go to camping

You will settle in the grounds of Saint-Exupery's castle.

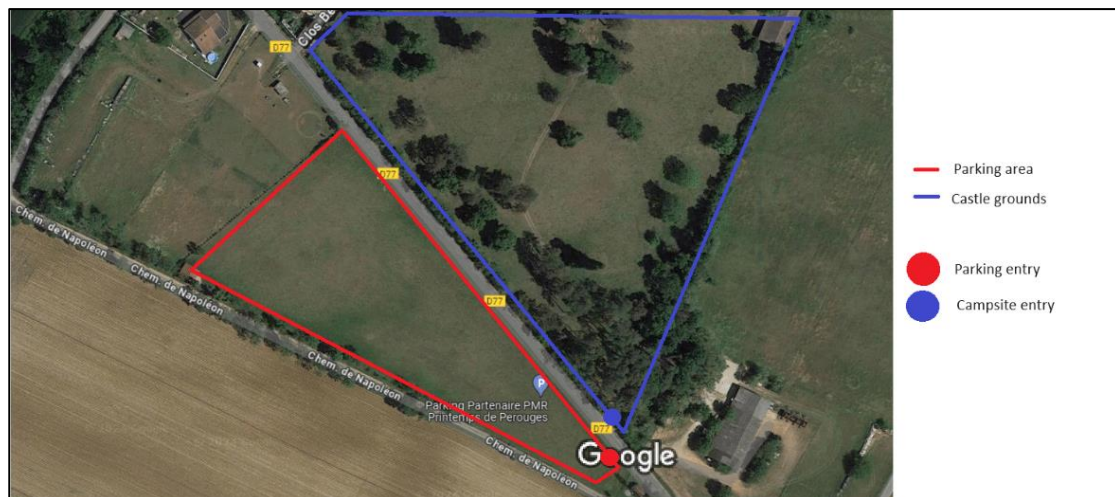
Address : Château de Saint-Maurice-de-Rémens, Rd77, 01500 Saint-Maurice-de-Rémens

Once you get your wristbands, you can go to the camping. Security guards will check the wristbands, if you don't have your wristband, you cannot enter the site.

We will give you a plan so you can know where you have to set.

You can enter the site with your vehicles to set your camp. Once you're done setting you have to leave your vehicles on the parking in front of the castle grounds for the rest of the competition. Obviously, you will be allowed to enter with your vehicles to dismantle your camp.

You can find further information on the Handbook Camping available on the [competition website](#).



Map view of the camping and the parking



Entry of the parking on the left



Entry of the camping on the right

D.Points of interest

- If you loose one of your wristband, please go to the welcome center to get a new one. Else you won't be able to enter neither the competition site nor the camping.
- It is highly recommended to arrive on August 26th
- You can leave until September 2nd, 12 am. No need to check out
- For the departure, you are allowed to let your trailer on Transpolis parking and can take it back on Monday September 2nd from 8 am